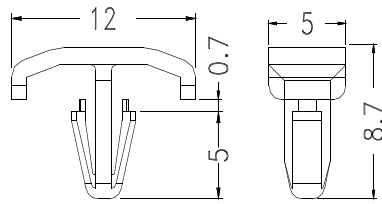


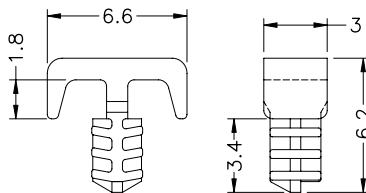
- ◆ MATERIAL: NYLON 66(UL)
- ◆ FLAME CLASS: 94V-2
- ◆ COLOR: NATURAL
- ◆ UNIT: mm

PART NO	MATERIAL	COLOR	BOARD THICKNESS	A	B	C	D	PACKAGE
MB-1	P.O.M UL94HB	WHITE	2.0~3.1	3.3~3.5	7.6	1.6	8.6	2000
MB-1N	NYLON 66 UL94V-2	NATURAL						
MB-1(B)	P.O.M UL94HB	BLACK						
MB-2	NYLON 66 UL94V-2	NATURAL	3.0~4.0	3.3~3.6	7.6	1.3	10.8	1000
MB-2(W)	P.O.M UL94HB	WHITE						
MB-2(B)	P.O.M UL94HB	BLACK						
MB-3	NYLON 66 UL94V-2	NATURAL	2.0~3.5	3.0~3.5	7.3	1.4	8.4	2000
MB-3(B)		BLACK						



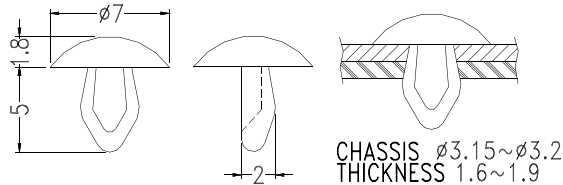
CHASSIS  $\phi 3.2$

PART NO	PACKAGE
MB-12	1000

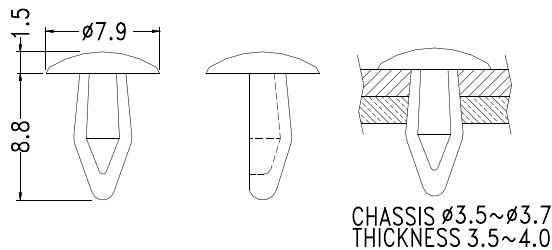


CHASSIS  $\phi 3.2$   
THICKNESS 3.0

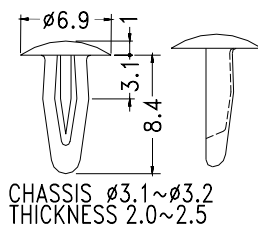
PART NO	PACKAGE
MBW-22	1000



PART NO	PACKAGE
MB-4	2000

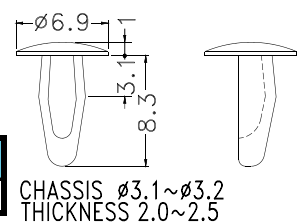


PART NO	PACKAGE
MB-5	2000



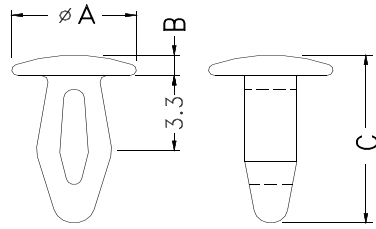
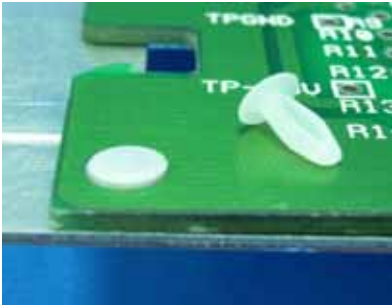
PART NO	PACKAGE
MB-6	2000

PART NO	PACKAGE
MB-7	2000



# Plastic Fastener - Snap Rivet

Hankook Fastener



CHASSIS  $\phi 2.5$   
THICKNESS 2.0~2.5

PART NO	A	B	C	PACKAGE
MB-16	4.8	0.9	7.4	1000
★MB-21	4.75	0.95	6.5	

- ◆ MATERIAL: NYLON 66(UL)
- ◆ FLAME CLASS: 94V-2
- ◆ COLOR: NATURAL/BLACK
- ◆ UNIT: mm

PART NO	PACKAGE
MB-18	1000

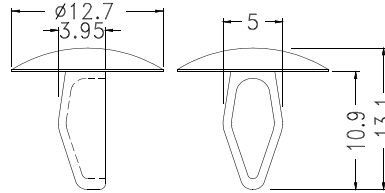
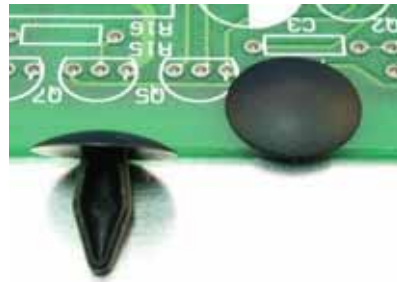
- ◆ MATERIAL: PC/ABS
- ◆ COLOR: GRAY
- ◆ UNIT: mm

PART NO	PACKAGE
MB-20	2000

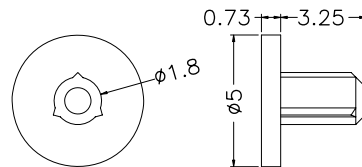
PART NO	PACKAGE
MB-19	1000

PART NO	PACKAGE
MB-8	1000

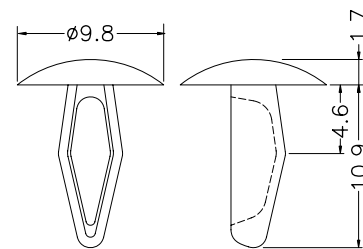
PART NO	PACKAGE
MBW5-12	1000



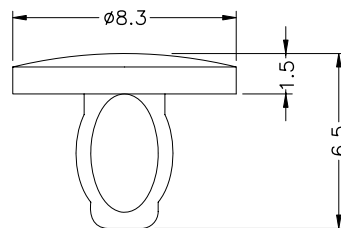
CHASSIS  $\phi 4.0$   
THICKNESS 2.5~3.5



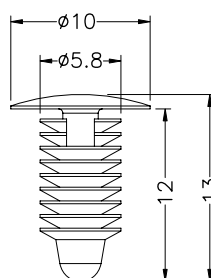
CHASSIS  $\phi 1.8 \sim \phi 2.0$



CHASSIS  $\phi 3.9 \sim \phi 4.05$   
THICKNESS 2.1~3.7

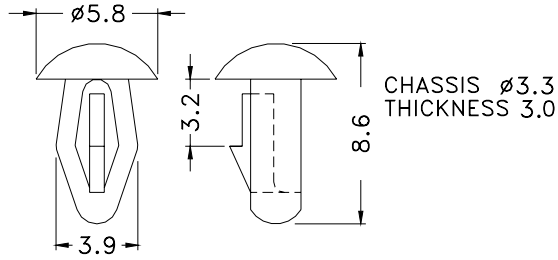


CHASSIS  $\phi 3.2 \sim \phi 3.5$

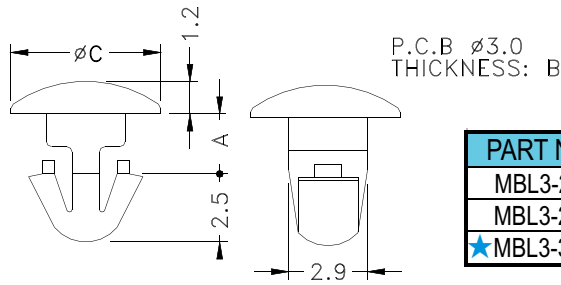


CHASSIS  $\phi 5.0 \pm 0.13$   
THICKNESS 0.7~4.0

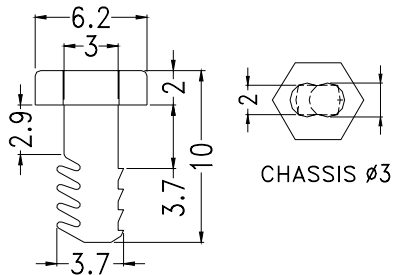
- ◆ MATERIAL: NYLON 66(UL)
- ◆ FLAME CLASS: 94V-2
- ◆ COLOR: NATURAL/BLACK
- ◆ UNIT: mm



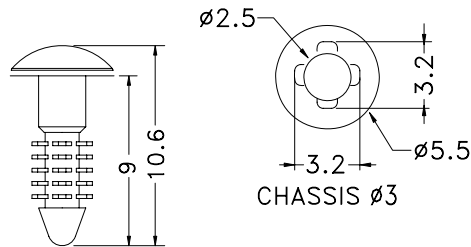
PART NO	PACKAGE
MBS3-3	2000



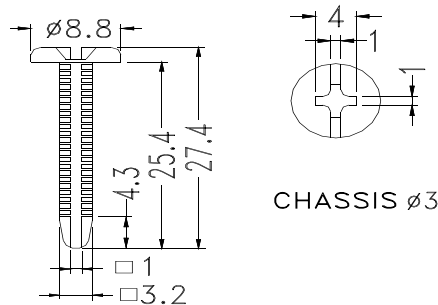
PART NO	A	B	C	PACKAGE
MBL3-2	2.2	2.0	5.5	2000
MBL3-2.5	2.5	2.3	6.4	
★MBL3-3	3.0	2.8	5.5	



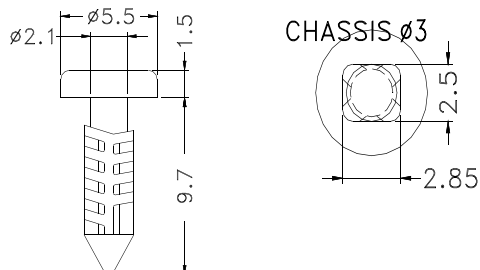
PART NO	PACKAGE
MBW3-8	1000



PART NO	PACKAGE
MBW-9	1000



PART NO	PACKAGE
MBW-18	1000

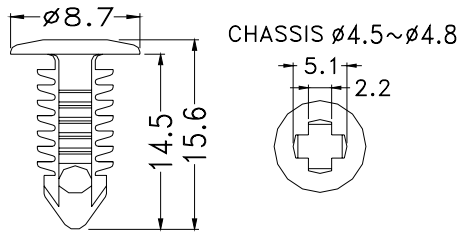


PART NO	PACKAGE
MBW-21	1000

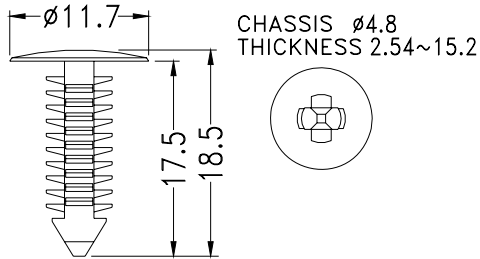
# Plastic Fastener - SNAP RIVET

Hankook Fastener

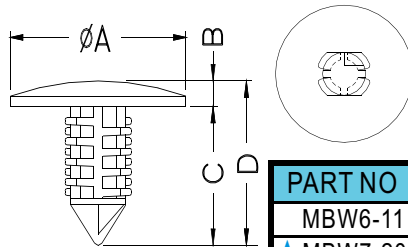
- ◆ MATERIAL: NYLON 66(UL)
- ◆ FLAME CLASS: 94V-2
- ◆ COLOR: NATURAL
- ◆ UNIT: mm



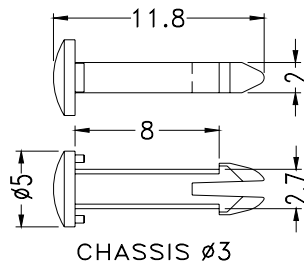
PART NO	PACKAGE
MBW-14	1000



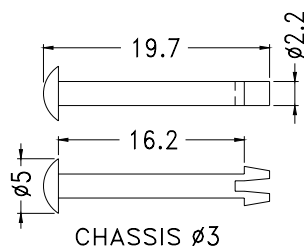
PART NO	PACKAGE
MBW-17	1000



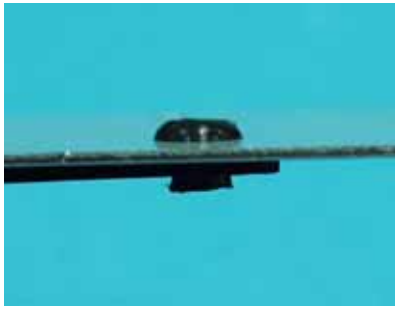
PART NO	A	B	C	D	MOUNTING HOLE	PANEL THICKNESS	PACKAGE
MBW6-11	18.5	2	11	13	6.35	0.8~7.4	1000
★MBW7-20	25.4	3	20	23	7.0	2.54~20	



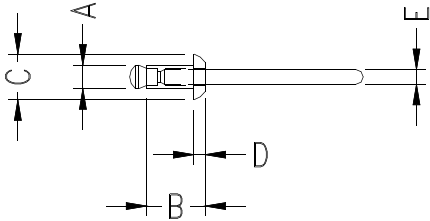
PART NO	PACKAGE
PNL-8	1000



PART NO	PACKAGE
PNL-18	1000



## Blind Rivet



PART NO	A	B	C	D	E	MOUNTING HOLE	CHASSIS THIKNSS	CUT OUT FORCE 剪斷力 (kg)	PACKAGE
CR32-1	3.2	6.4	6.4	1.4	2.1	φ 3.3	1.0~4.0	20.0	500
CR32-2		9.6					4.0~7.0		
CR32-3		12.7					7.0~10.0		
CR40-1	4.0	6.4	8.0	1.8	2.4	φ 4.1	1.0~4.0	25.0	
CR40-2		9.6					4.0~7.0		
CR40-3		12.7					7.0~10.0		
CR48-1	4.8	8.0	9.6	2.0	2.8	φ 4.9	1.5~5.0	40.0	
CR48-2		11.2					5.0~8.0		
CR48-3		14.4					8.0~11.0		
CR56-1	5.6	9.6	12.0	2.2	3.4	φ 5.7	2.0~5.5	65.0	
CR56-2		12.7					5.5~8.5		
CR56-3		15.9					8.5~12.0		

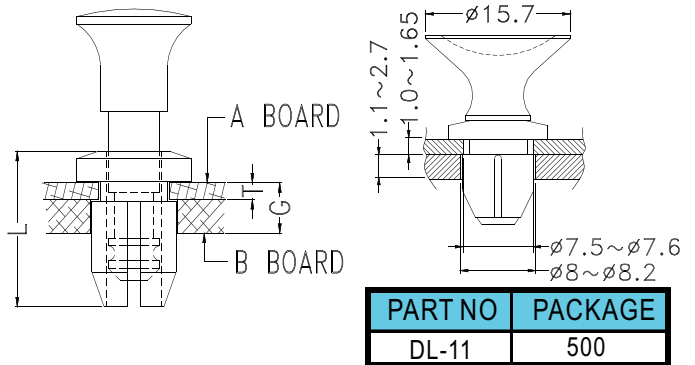
# Plastic Fastener - DOOR LATCH



PART NO	L	T	G	HOLE		PACKAGE
				A BOARD	B BOARD	
DL-1	11.1	1.6	2.0~4.2	φ 7.5	φ 8.0	500
DL-2						
DL-3	10.4	1.6	2.0~4.2	φ 6.0~φ 6.1	φ 6.4	
DL-4	11.4	2.5	3.0~5.2			
DL-5	9.5	1.6	2.0~3.6	φ 4.5	φ 4.8	
DL-6	12.0	2.4	3.5	φ 6.6	φ 7.8	
DL-7						
DL-9	13.0	4.3	6.9	φ 6.0	φ 6.35	
DL-10	11.0	2.0	5.5	φ 6.0	φ 6.4~6.5	

- ◆ CLIP MATERIAL: NYLON 66UL94V-2/  
PC UL94V-2
- ◆ PIN MATERIAL: NYLON 66 UL94V-2
- ◆ DL-11 MATERIAL: POM
- ◆ COLOR: BLACK/WHITE/NATURAL
- ◆ UNIT: mm

PLUNGER HEAD STYLE			
DL-1/DL-6	DL-2	DL-3/DL-4	DL-5



PART NO	PACKAGE
DL-11	500